



Fusing
Ancient
Wisdom with
Cutting Edge
Technology

THE ASSEMBLAGE POINT

THE ASSEMBLAGE POINT

the missing link to true health

If only the medical establishment would recognise the Assemblage Point. What would be the ramifications of a public who were aware of its significance in terms of human health and vitality?

Maybe some doctors, consultants and other medical experts have heard of the energy body, the human energy field, or even meridians and life force energy. Perhaps they are aware that there is a flow of electrons which pass through the body from the brain to the organs and glands and ultimately the millions of cells that make up the human body.

However, by being an integral part of our energy body, very few people can see the Assemblage Point – it is more often felt than seen – and you certainly cannot pop a pill to affect its position or angle and hence improve health.

The Assemblage Point is the human energy vortex – the point in the electro-magnetic body where life force energy, chi or prana enters the body. Normally around the chest, an optimally situated Assemblage Point means we are balanced mentally and physically. When ‘off-centre’ in some way, it can adversely affect our thoughts, feelings, behaviour and health.

In 1996 four detailed articles about the Assemblage Point were published in Positive Health magazine. In August 2000 Dr Angela Blaen became the first person ever to have the existence of her Assemblage Point verified and measured scientifically. She, in turn, established The Assemblage Point Centre in Devon, which provides information about the Assemblage Point and offers training in manipulating it the traditional way using a large crystal and the Shaman’s Blow – a hard hit on the patient’s back.

Perhaps, till now, it has been too much of a niche medical factor to carve its place in complementary medicine. Or perhaps the investment in high-tech equipment has deterred sufficient practitioners from placing this revolutionary and yet ancient method of restoring health on the pedestal it so deserves.

That is where Medica Health steps in. With a sincere and determined desire to bring healing technology to those who need it, this innovative company is offering a gentle method of restoring health by offering a new format in equipment to move Assemblage Points.

“Change is the law of life and those who look only to the past or present are certain to miss the future.”

John F. Kennedy (1917 - 1963)

In line with its catchphrase ‘the power to heal’ Medica Health has developed an affordable and portable machine that allows therapists or home users to practise electronic gem therapy wherever and whenever they so desire.

The Theragem uses a combination of light, colour, wave frequency and crystalline energy, not only to move Assemblage Points, but also to relax the mind, taking away stress and anxiety, and treat a range of other conditions.

First, let’s take a more detailed look at the Assemblage Point, its history and significance to human health.

MANIPULATING THE ASSEMBLAGE POINT TO IMPROVE HEALTH

An Assemblage Point that is out of its normal position can often be the underlying cause of ill health and can be moved back into its optimum position by treatment with Theragem.

With practice and training anyone can locate another person’s Assemblage Point and, though useful, it is not necessary to have a detailed knowledge of anatomy and physiology.

SHORT HISTORY

Around the time of the 1960s and 70s, Dr Carlos Castaneda published ‘The Teachings of Don Juan’ and eleven other books based on his apprenticeship to the American Indian Shaman, Don Juan. Dr Castaneda had been a student in anthropology, in which he later gained a PhD, and had gone to study medicinal plants of the American Southwest.

He met and studied under Don Juan who, amongst other things, passed on his knowledge of the Assemblage Point.

Castaneda's book 'The Fire from Within' published in 1984 particularly focuses on awareness and shifting of the Assemblage Point. His other books detail aspects of Shamanism that he learnt from Don Juan, in particular awareness of spirit, honing intuition and finding an opening to freedom.'

Although treatment of the Assemblage Point, being a form of energy medicine, has not yet reached mainstream medicine, it has its exponents, such as Dr Blaen.

“On the Shamanistic side we consistently see strong reactions to the Assemblage Point process. This is the most singular demonstration that we are addressing the human energy field holistically, not just fixing parts in a machine.”

**Dr Brad Haire (MD)
The Riversong Centre of
Integrative Medicine
New Mexico, USA**



THE ASSEMBLAGE POINT

the missing link to true health

LIFE CHANGING RESULTS

A study conducted on 100 people shows significant positive results of the protocol of Assemblage Point Reconnection (APR), with individuals expressing a welcome improvement of their composure in day-to-day life, being able to cope in a constructive way towards life's challenges.

Below shows the before and after heart rate variability reading of a 50-year-old male, his basic protocols of Elation and Spleen sessions with Theragem Fusion Light Therapy help prepare the biological terrain. After the Assemblage Point Reconnection, positive changes in heart rhythm and variability are both visible and experiential. The results of this are demonstrated in how well he feels physically, emotionally, mentally and on a spiritual level.



Before APR



After APR

DESCRIPTION

The Assemblage Point (AP) is the very centre of the human energy system, from which a vortex emerges that surrounds the entire body. The location (normally around the chest) and angle of entry has a direct effect upon the client's energy (also known as qi, chi or prana) and is also linked to the activity level of organs and glands, including the brain. Therefore, a person's behaviour, feelings and health are directly affected by the AP.

Because of this, it is only taken into account within the field of energy medicine. It is, to date, amongst most medical treatments and therapies, an unknown or disregarded feature of a person when they present for treatment, whether their problem be based upon physical, mental or emotional reasons.

However, in the ancient Mayan, Hebrew, Vedic and Native American traditions, the AP - in particular its location and entry angle - was a key part of diagnosis and treatment of a patient.

The Assemblage Point has been called the missing link to resolving health problems and this partly explains why so many people continue to suffer without a solution for their painful or debilitating symptoms. The fact that it is not taken into consideration means that, often, a meaningful result cannot be obtained.

APPEARANCE OR FEEL OF THE ASSEMBLAGE POINT

The AP is a part of the energy body, or aura, around the physical body. It travels through from a point normally around the chest to the back. It may be felt or seen by some people as energy lines concentrating into one point of the body.

It may look like a bright area of energy and usually has a diameter of 1 cm where it meets the body. Some clients may experience tenderness on the skin at the point where the AP enters the body, and if you touch this point quite firmly, the client may feel it through to its continuation point on their back.



WHAT CAUSES THE ASSEMBLAGE POINT TO BECOME OFFSET?

The AP in a healthy individual will be as shown on diagrams 1 & 3 below.

There are many reasons why a patient's AP may be out of position. Shock and trauma, divorce and bereavement, drugs or alcohol addiction, infection, surgical operations, childbirth, accidents, illness, violence and intimidation, rape, hunger and thirst can all cause it to either drop or lift out of its normal position. Patients may have an idea that they experienced some kind of change inside following one of these events, but be unable to bring about a return to their former selves via self-reasoning, pills, potions or therapy.

The lower the position of the AP, the greater an imbalance may be found in medical tests on a patient's organs and glands. Someone with a low AP will have a distorted energy field and low energy. The more time that passes, the more dangerous this becomes, and the more serious a disease it can lead to. The sooner after the original cause that the AP is corrected, the better it is for the patient's health.

Many people in today's society have an AP that is slightly to the right. The left brain processes logical thought, as opposed to creative processes in the right brain. People with busy lifestyles, using a lot of physical and mental energy, would have an active left brain, and this would move their AP to the right.

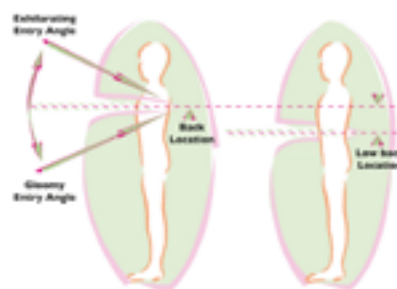


Diagram 1. Offset entry and exit angles of the Assemblage Point

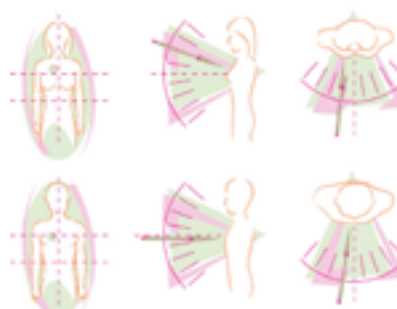


Diagram 2. Normal Assemblage Point positions for a male and female

MOVING AN OFFSET ASSEMBLAGE POINT

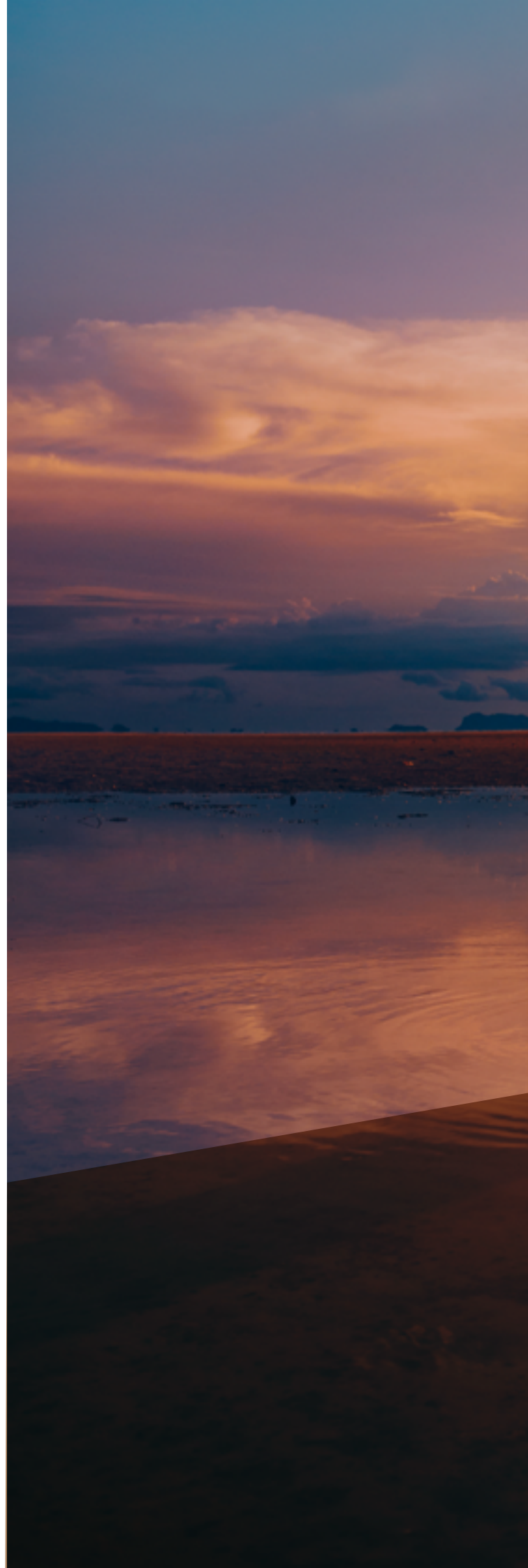
Traditionally, Shamans moved offset APs using a large crystal and a blow to the back – this technique is known as the Shaman’s Blow and is still practised by some today. Another technique using a crystal is the sliding shift, which omits the blow for people who could not withstand the force, such as those with a pacemaker, heart or lung problems.

The modern, easy way to positively relocate an offset AP is to use a gentle treatment with Theragem. A succession of relaxing treatments, where the client simply lies or sits on a couch, will offer them the benefits of inner peace and contentment, better ability to cope with life, balanced energy in the glands and organs and better health as a result. The benefits are endless.

HEALTH MAINTENANCE AND THE ASSEMBLAGE POINT

Due to the unexpected nature of life, anyone’s Assemblage Point can become offset at any time. Theragem treatments can be used to provide regular Assemblage Point assessment and correction as part of maintaining a healthy lifestyle.

Sports people or teams, business people or anyone who wants to give themselves the best chance of success in any area of life can benefit from Theragem treatments and Assemblage Point correction. It can be an important part of professional or personal development, assisting a range of mental and physical abilities, including assertiveness, sociability, hearing, posture, and many more.





We have had very good results with a wide variety of ailments. My clinic specializes in breast cancer and we can achieve great results with nutrition, infra-red saunas, following it by thermal imaging. A lot of these women that come to stay with us have a great feeling of resentment that we try to release with different psychology methods. So far our best results have come through the fusion of light and electromagnetic frequencies as the person relives the memory holding them back and then is at ease letting go.”

Dr Inez Alfaro
Integrative Clinic – Puerto Rico

WANT TO KNOW MORE?

BROCHURES ARE AVAILABLE FOR ALL THESE PRODUCTS, PLEASE ASK FOR YOUR COPY.

Theragem Gemcups

Gemcups are at the heart of Theragem. The unique healing properties held inside each one differs from crystal to crystal. With a great choice of over 60 different blends to help dissolve a wide range of conditions, all Gemcups can be used in all Theragem configurations. We offer a variety of blends created for Wellness, Beauty and the Collective Consciousness on physical, emotional, mental, etheric, and spiritual levels. Our special Gemcups brochure explains the uses for each Gemcup. Ask for your copy today!



Gemcups Flight Case

A safe, professional way to store your collection of Gemcups. For practitioners with multiple clinics, or for those specialists who visit patients at home, the Aluminium Flight Case is the perfect accessory.

Accessories: Acupuncture Wands

Non-Invasive Light Beam Therapy

Using well-known Chinese meridian acupuncture points on the body, the Theragem Acupuncture Wands can deeply penetrate the skin without needing to puncture it.



MHI Academy

Complementary learning is designed to empower dedicated therapists to achieve positive results quickly and efficiently. By completing our primary courses at your own pace, incorporating Theragem becomes both accessible and enjoyable. Welcome to www.medicahealth-academy.org!

LIVING WATER VORTEXER

The Vortexér jug has been created and developed to detox and structure water from the tap. The Vortexér's silver, leaf-shaped propeller uses an inward-rotation, left-turning spiral-shaped movement that raises the Bovis value, generating life energy and clearing unwanted toxins and chemical residues.



OFFICEGEM WATER PURIFIER

A beautiful blend of specialized stones, including Shungite, a favourite water cleanser par excellence, and other lesser known gems, chosen for their unique ability to clear, cleanse, and purify any liquid, resulting in the best taste, quality, and purity.

HEARTQUEST

The Heart Quest – Heart Rate Variability device is the perfect time-effective tool to monitor and analyse your heart's beating patterns within just 300 heartbeats.



SUNRISE SUNSET

The SunRiseSunSet SR-100 is the relaxing, unique and calming solution that you have been looking for. The SRSS PEMF mattress and clock can be used at home or as a complimentary therapy together with our Theragem range.

THERAGEM STAR PENDANTS

Waterproof and sealed with quantum technology, what a gift for a joyful lifetime of grounding and happiness!



FOR MORE INFORMATION ON THERAGEM™ AND THE
ASSEMBLAGE POINT VISIT: WWW.MEDICAHEALTH.ORG



MEDICAHEALTH


INFO@MEDICAHEALTH.ORG
+ 44 (0) 1254 245013
WWW.MEDICAHEALTH.ORG

 **THERAGEM™**

DISCLAIMER: Medica Health International Ltd is committed to discovering, designing and introducing leading-edge wellness equipment world-wide. Any and all products offered by Medica Health International Ltd are intended to complement, not replace, the various therapies offered by your own licensed physician or healthcare professional. Our equipment is not intended to diagnose or cure any ailments or afflictions. Product images shown in this document may vary slightly from the actual device due to individual country regulations and our on-going commitment to quality and R&D. Medica Health International Ltd cannot be held responsible for improper use.